



# HARLEY STREET


MARYLEBONE LONDON W1

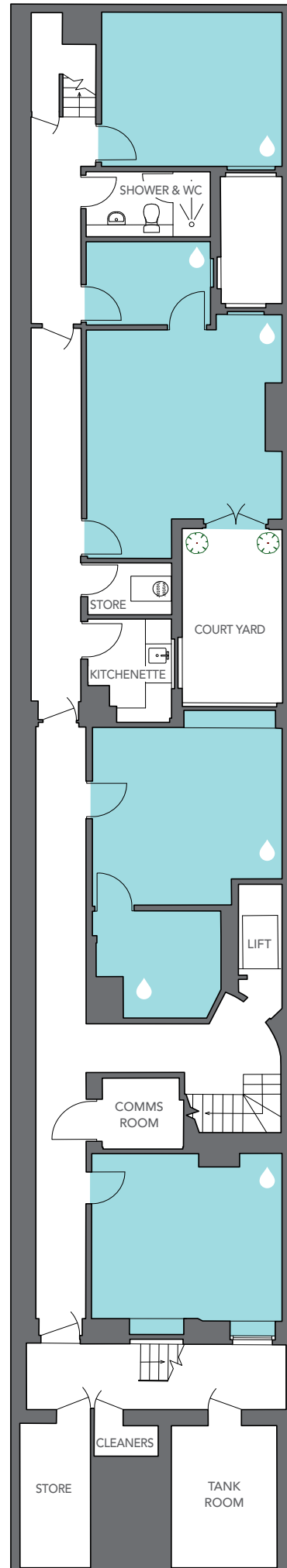
FLOORPLAN:

## LOWER GROUND FLOOR

1,094 SQ FT / 102 SQ M

*NOTE: all areas are approximate and will be verified on completion in accordance with RICS Code of Measuring Practice.*

 CAPPED OFF WATER, DRAINAGE AND ELECTRICITY FOR HAND BASINS





# HARLEY STREET


MARYLEBONE LONDON W1

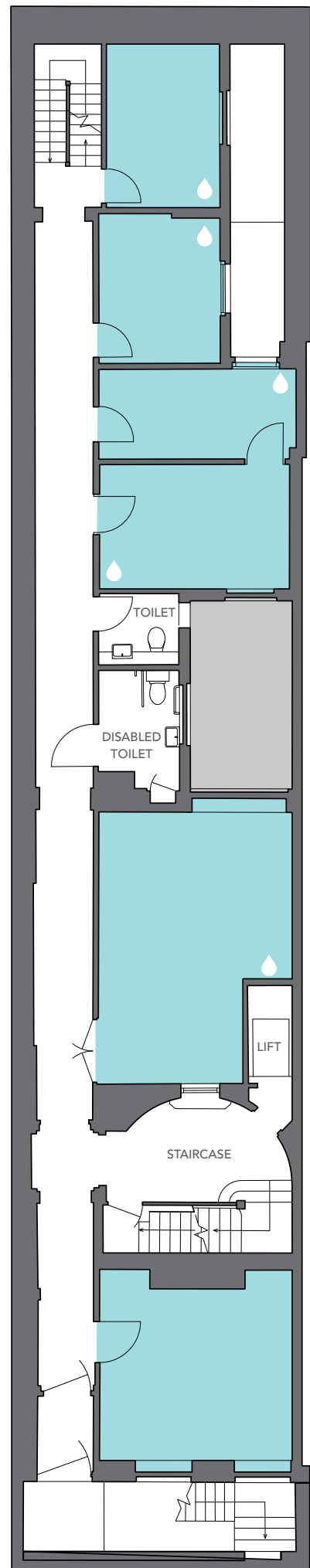
FLOORPLAN:

**GROUND FLOOR**

936 SQ FT / 87 SQ M

*NOTE: all areas are approximate and will be verified on completion in accordance with RICS Code of Measuring Practice.*

 CAPPED OFF WATER, DRAINAGE AND ELECTRICITY FOR HAND BASINS





# HARLEY STREET


MARYLEBONE LONDON W1

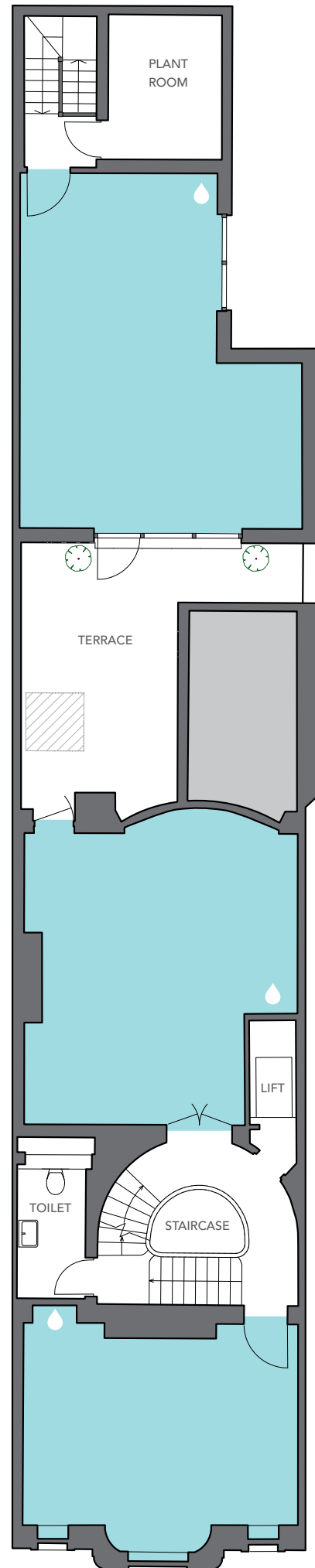
FLOORPLAN:

## FIRST FLOOR

1,124 SQ FT / 104 SQ M

*NOTE: all areas are approximate and will be verified on completion in accordance with RICS Code of Measuring Practice.*

 CAPPED OFF WATER, DRAINAGE AND ELECTRICITY FOR HAND BASINS





# HARLEY STREET


MARYLEBONE LONDON W1

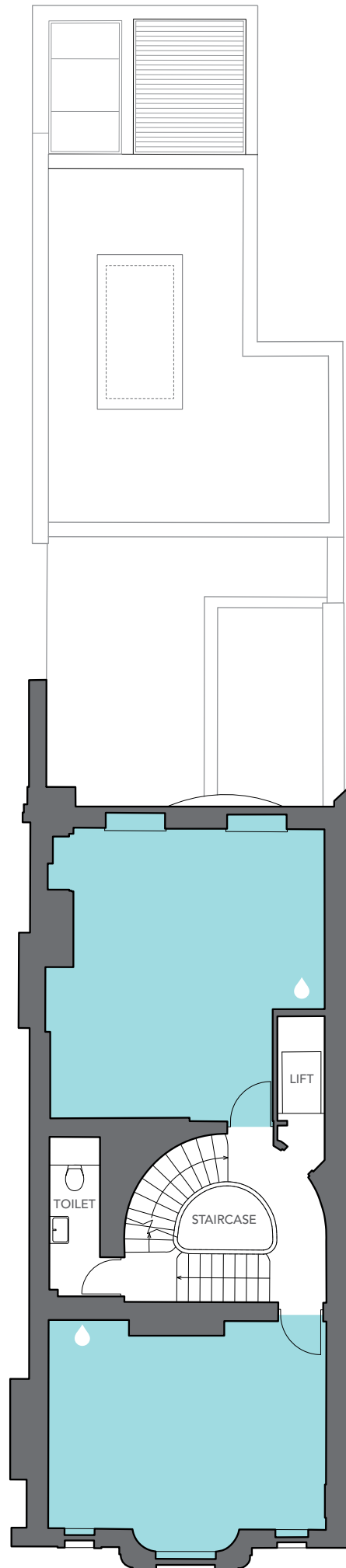
FLOORPLAN:

## SECOND FLOOR

795 SQ FT / 74 SQ M

*NOTE: all areas are approximate and will be verified on completion in accordance with RICS Code of Measuring Practice.*

 CAPPED OFF WATER, DRAINAGE AND ELECTRICITY FOR HAND BASINS





# HARLEY STREET


MARYLEBONE LONDON W1

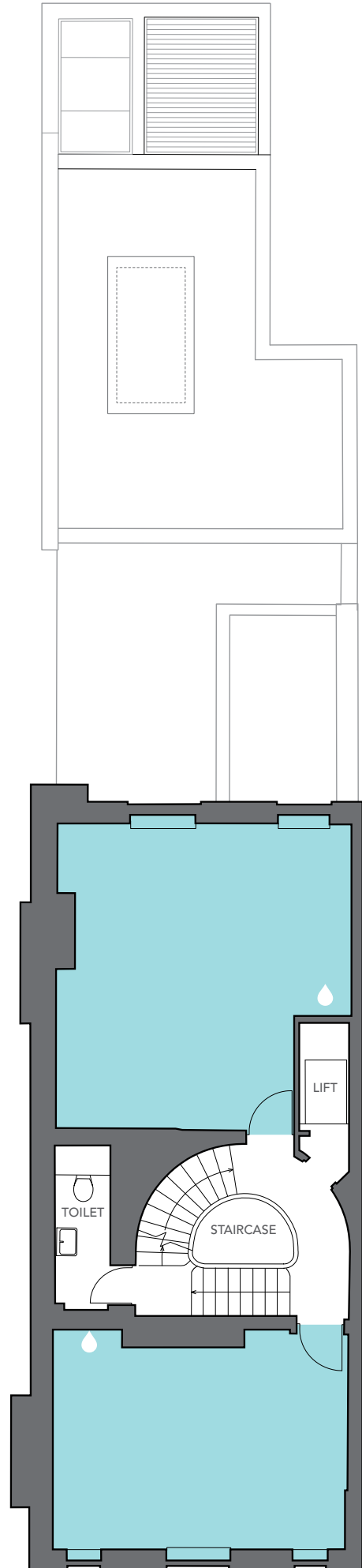
FLOORPLAN:

## THIRD FLOOR

655 SQ FT / 61 SQ M

*NOTE: all areas are approximate and will be verified on completion in accordance with RICS Code of Measuring Practice.*

 CAPPED OFF WATER, DRAINAGE AND ELECTRICITY FOR HAND BASINS





# HARLEY STREET


MARYLEBONE LONDON W1

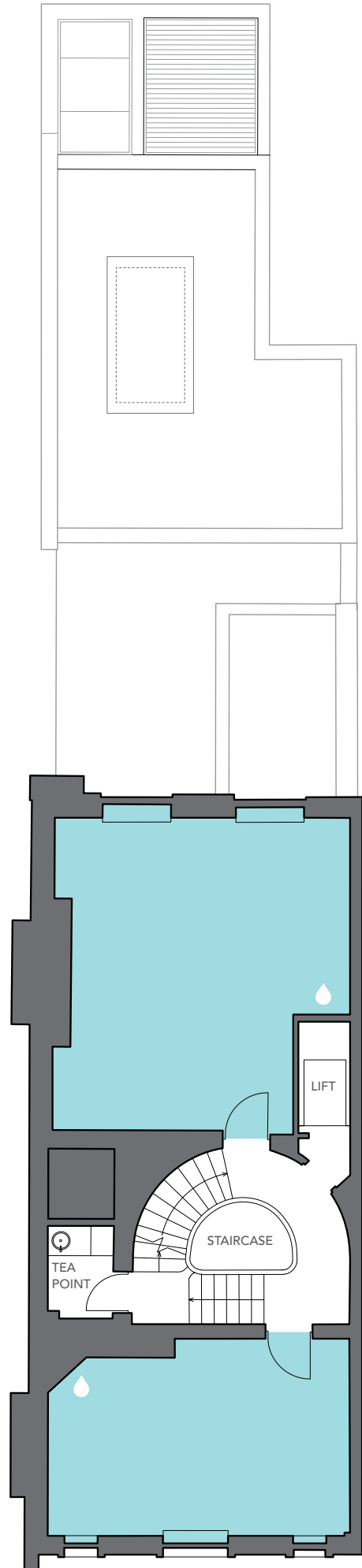
FLOORPLAN:

## FOURTH FLOOR

597 SQ FT / 55 SQ M

*NOTE: all areas are approximate and will be verified on completion in accordance with RICS Code of Measuring Practice.*

 CAPPED OFF WATER, DRAINAGE AND ELECTRICITY FOR HAND BASINS





# HARLEY STREET


MARYLEBONE LONDON W1

FLOORPLAN:

## FIFTH FLOOR

526 SQ FT / 49 SQ M

*NOTE: all areas are approximate and will be verified on completion in accordance with RICS Code of Measuring Practice.*

 CAPPED OFF WATER, DRAINAGE AND ELECTRICITY FOR HAND BASINS

