




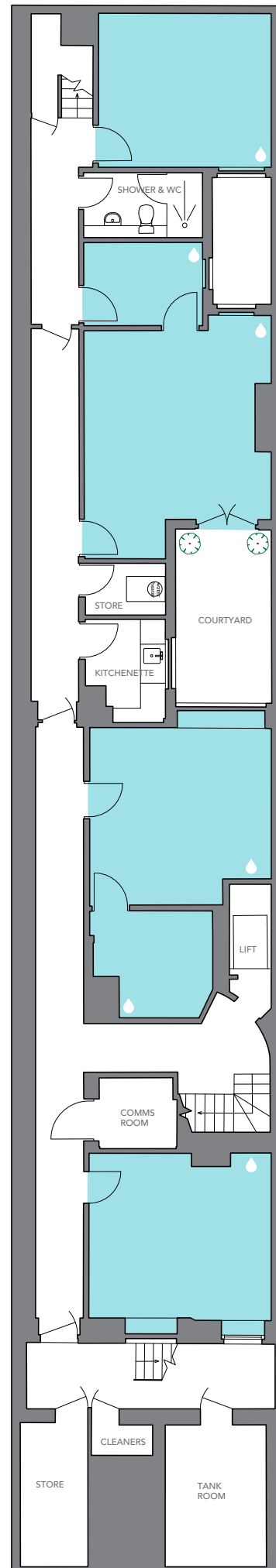
HARLEY STREET

MARYLEBONE LONDON W1

FLOORPLAN:
LOWER GROUND FLOOR
1,022 SQ FT / 95 SQ M

NOTE: all areas are approximate and will be verified on completion in accordance with RICS Code of Measuring Practice.

 CAPPED OFF WATER, DRAINAGE AND ELECTRICITY FOR HAND BASINS





HARLEY STREET


MARYLEBONE LONDON W1

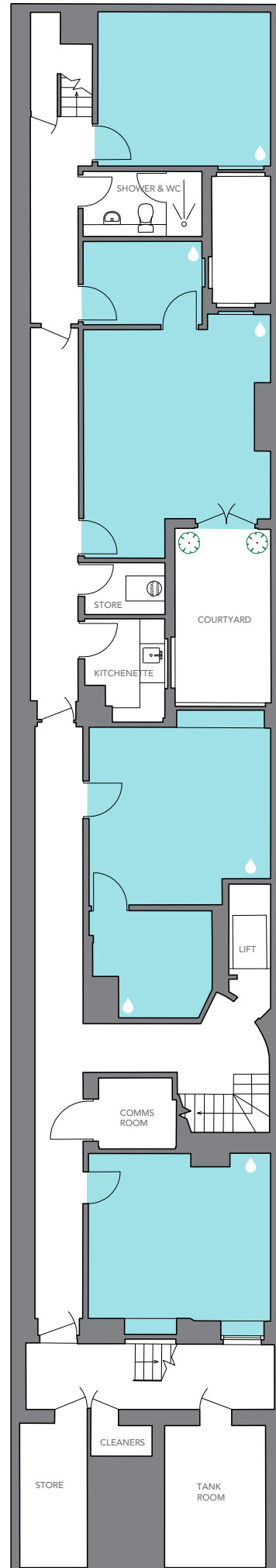
FLOORPLAN:

GROUND FLOOR

858 SQ FT / 80 SQ M

NOTE: all areas are approximate and will be verified on completion in accordance with RICS Code of Measuring Practice.

 CAPPED OFF WATER, DRAINAGE AND ELECTRICITY FOR HAND BASINS





HARLEY STREET


MARYLEBONE LONDON W1

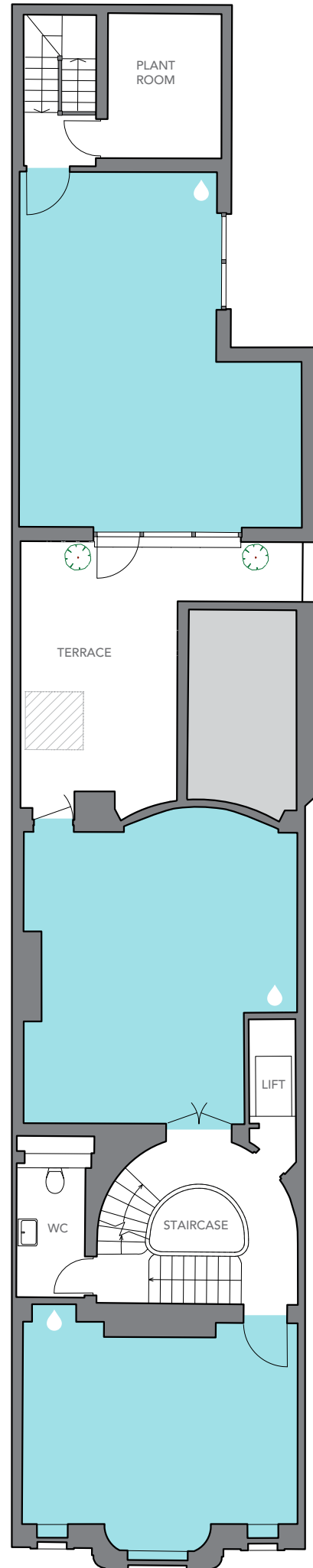
FLOORPLAN:

FIRST FLOOR

989 SQ FT / 92 SQ M

NOTE: all areas are approximate and will be verified on completion in accordance with RICS Code of Measuring Practice.

 CAPPED OFF WATER, DRAINAGE AND ELECTRICITY FOR HAND BASINS





HARLEY STREET


MARYLEBONE LONDON W1

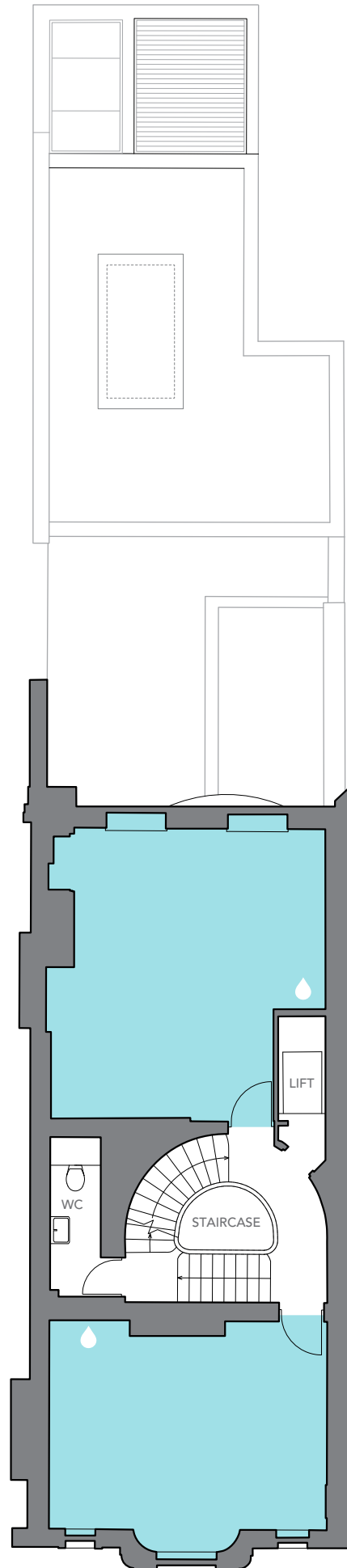
FLOORPLAN:

SECOND FLOOR

608 SQ FT / 56 SQ M

NOTE: all areas are approximate and will be verified on completion in accordance with RICS Code of Measuring Practice.

 CAPPED OFF WATER, DRAINAGE AND ELECTRICITY FOR HAND BASINS

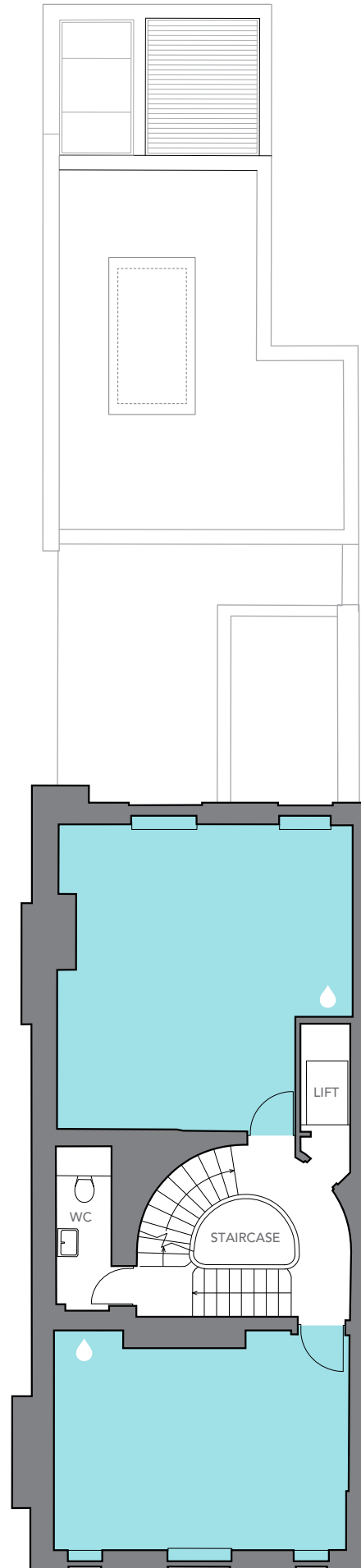


55
HARLEY STREET
MARYLEBONE LONDON W1

FLOORPLAN:
THIRD FLOOR
614 SQ FT / 57 SQ M

NOTE: all areas are approximate and will be verified on completion in accordance with RICS Code of Measuring Practice.

🔹 CAPPED OFF WATER, DRAINAGE AND ELECTRICITY FOR HAND BASINS





HARLEY STREET


MARYLEBONE LONDON W1

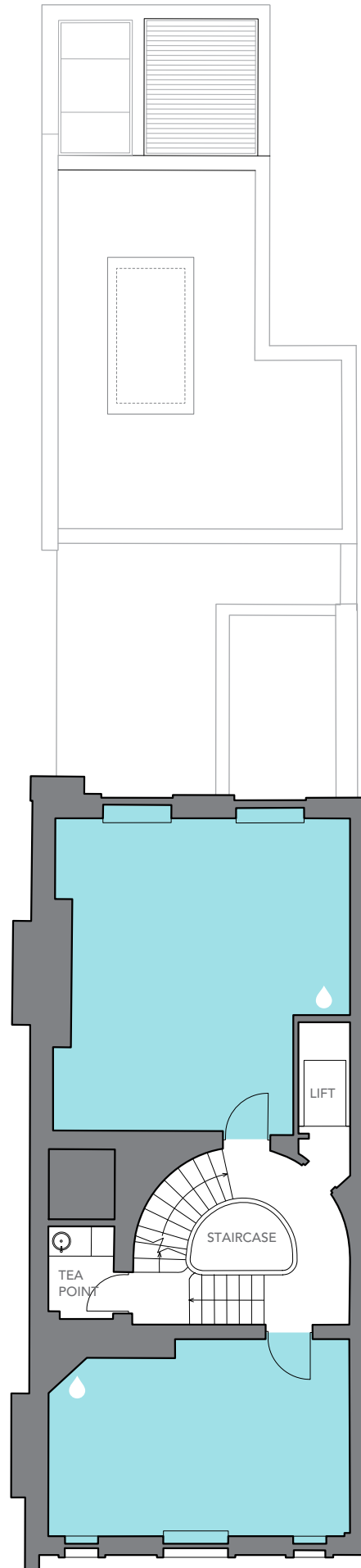
FLOORPLAN:

FOURTH FLOOR

571 SQ FT / 53 SQ M

NOTE: all areas are approximate and will be verified on completion in accordance with RICS Code of Measuring Practice.

 CAPPED OFF WATER, DRAINAGE AND ELECTRICITY FOR HAND BASINS





HARLEY STREET


MARYLEBONE LONDON W1

FLOORPLAN:

FIFTH FLOOR

495 SQ FT / 46 SQ M

NOTE: all areas are approximate and will be verified on completion in accordance with RICS Code of Measuring Practice.

 CAPPED OFF WATER, DRAINAGE AND ELECTRICITY FOR HAND BASINS

