




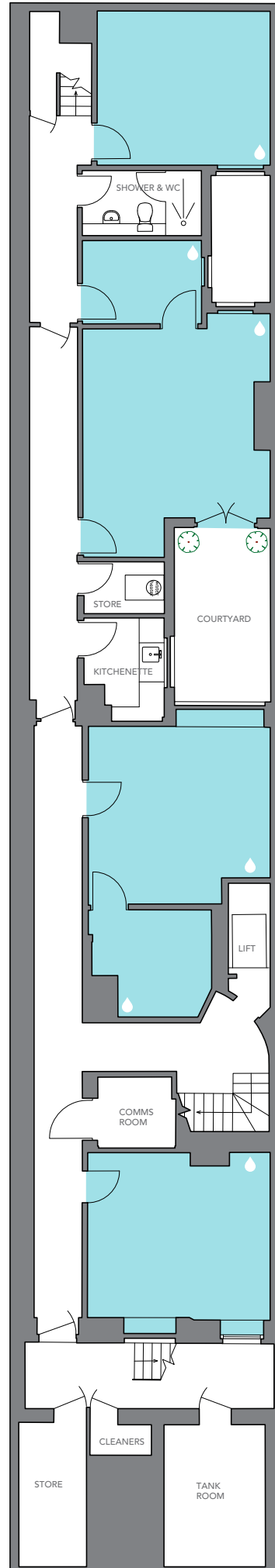
# HARLEY STREET

MARYLEBONE LONDON W1

FLOORPLAN:  
**LOWER GROUND FLOOR**  
1,022 SQ FT / 95 SQ M

*NOTE: all areas are approximate and will be verified on completion in accordance with RICS Code of Measuring Practice.*

 CAPPED OFF WATER, DRAINAGE AND ELECTRICITY FOR HAND BASINS





# HARLEY STREET


MARYLEBONE LONDON W1

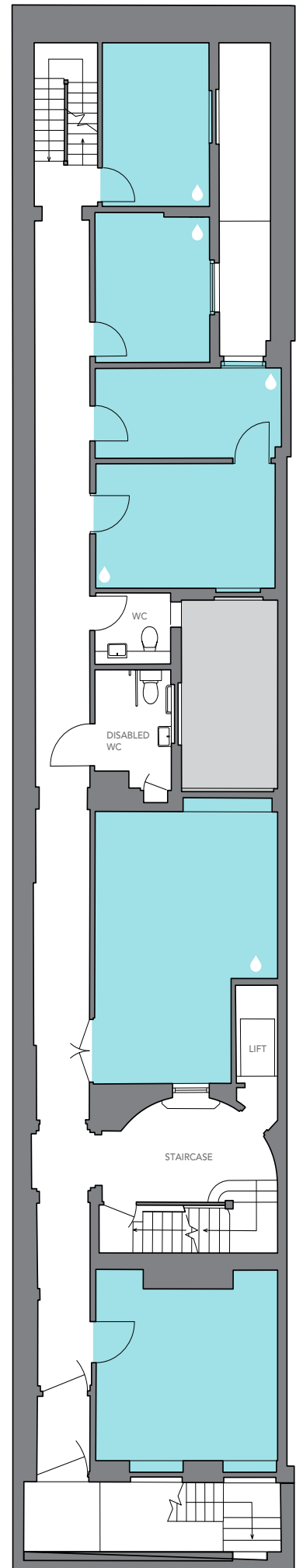
## FLOORPLAN:

### GROUND FLOOR

858 SQ FT / 80 SQ M

*NOTE: all areas are approximate and will be verified on completion in accordance with RICS Code of Measuring Practice.*

 CAPPED OFF WATER, DRAINAGE AND ELECTRICITY FOR HAND BASINS





# HARLEY STREET


MARYLEBONE LONDON W1

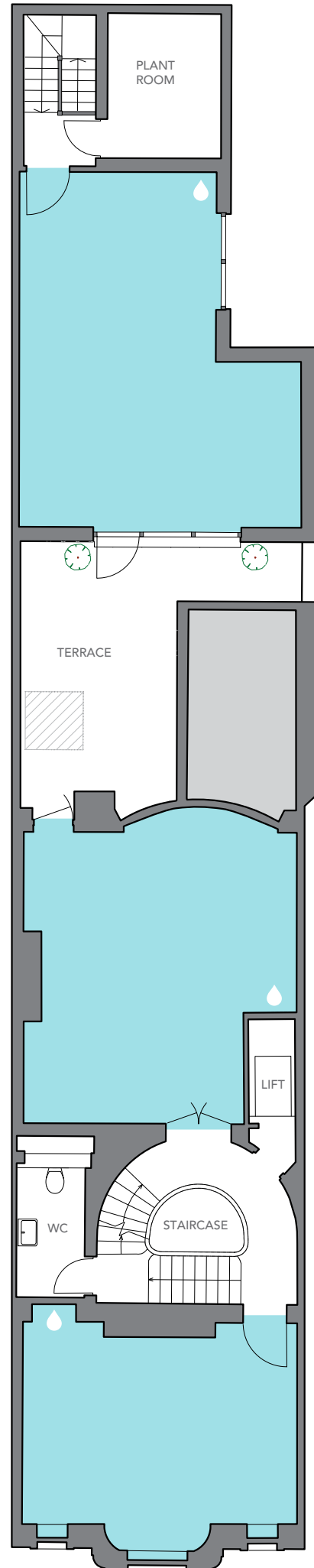
FLOORPLAN:

**FIRST FLOOR**

989 SQ FT / 92 SQ M

*NOTE: all areas are approximate and will be verified on completion in accordance with RICS Code of Measuring Practice.*

 CAPPED OFF WATER, DRAINAGE AND ELECTRICITY FOR HAND BASINS





# HARLEY STREET


MARYLEBONE LONDON W1

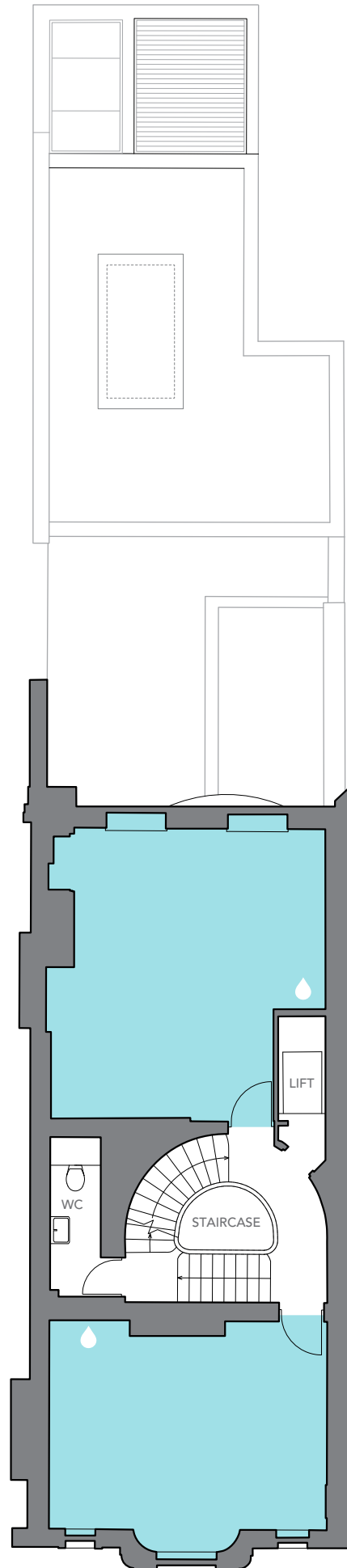
FLOORPLAN:

## SECOND FLOOR

608 SQ FT / 56 SQ M

*NOTE: all areas are approximate and will be verified on completion in accordance with RICS Code of Measuring Practice.*

 CAPPED OFF WATER, DRAINAGE AND ELECTRICITY FOR HAND BASINS





# HARLEY STREET


MARYLEBONE LONDON W1

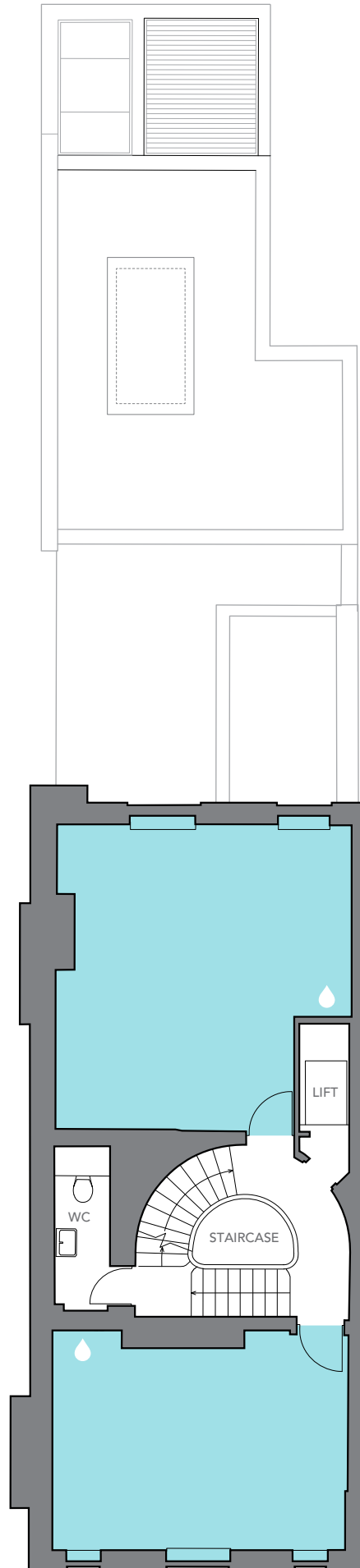
FLOORPLAN:

**THIRD FLOOR**

614 SQ FT / 57 SQ M

*NOTE: all areas are approximate and will be verified on completion in accordance with RICS Code of Measuring Practice.*

 CAPPED OFF WATER, DRAINAGE AND ELECTRICITY FOR HAND BASINS





# HARLEY STREET


MARYLEBONE LONDON W1

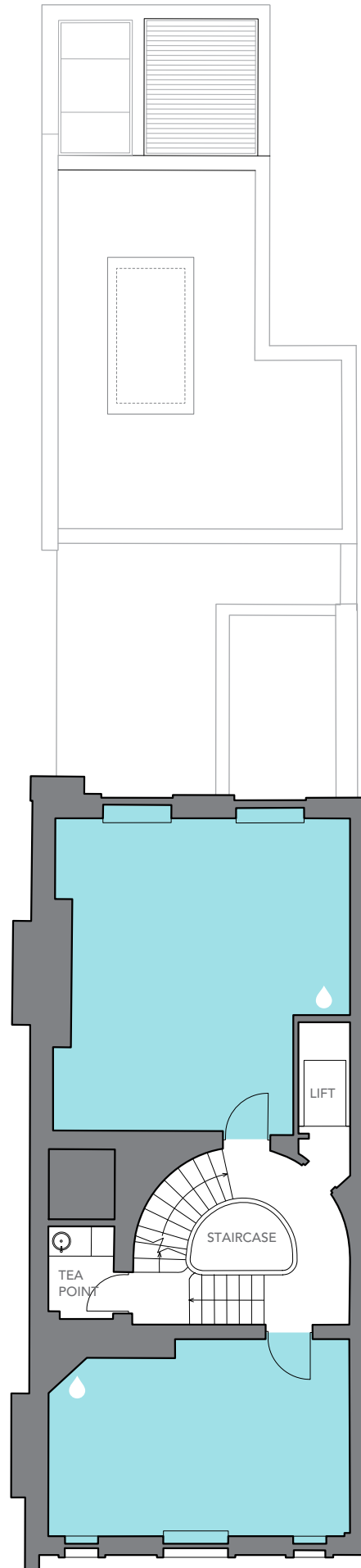
FLOORPLAN:

## FOURTH FLOOR

571 SQ FT / 53 SQ M

*NOTE: all areas are approximate and will be verified on completion in accordance with RICS Code of Measuring Practice.*

 CAPPED OFF WATER, DRAINAGE AND ELECTRICITY FOR HAND BASINS





# HARLEY STREET


MARYLEBONE LONDON W1

FLOORPLAN:

## FIFTH FLOOR

495 SQ FT / 46 SQ M

*NOTE: all areas are approximate and will be verified on completion in accordance with RICS Code of Measuring Practice.*

 CAPPED OFF WATER, DRAINAGE AND ELECTRICITY FOR HAND BASINS

